

Runge Software News



OCTOBER 2008

Welcome to the October 2008 issue of Runge Software News, our bi-monthly newsletter that provides you with simple, easy-to-read information on how to get the most out of Runge's technology solutions.

In this issue we discuss the new Runge licensing system and provide you with the latest product release and training details. We also have our regular sections: hints and tips, forum topics, help, etc.

Runge Announces New License Management System

A new Runge License Management System (RLMS) has been adopted for all Runge-produced software products. The rollout of the RLMS will commence with the release of the following products:

XPAC 7.9	XERAS 7.7
TALPAC 10	DRAGSIM 4.0
FRAC SIS 5.2	FACETS 2.0
XACT 1.3.1	

New license files will be required for customers who upgrade to the latest release of any product listed above. These license files will be distributed by Runge and will accompany the product release. Older versions will continue to use the old license files.

The RLMS is being deployed to improve the security and flexibility of the licensing system. Please note the following key points:

- The current licensing models (i.e. Single User, Site and Named User) will not change.
- Existing dongles will continue to be used for Single User licenses with the exception of FracSIS users. Runge will distribute new dongles free of charge to existing FracSIS customers.
- SiteAdmin will be replaced by Server License Manager (SLM). The License Server will now require a dongle to serve licenses. Dongles will be distributed free of charge to existing Named User license customers.
- Products using both the old and new licensing system can be run side-by-side.

The RLMS will be accompanied by comprehensive help guides to help you set up your new licenses. If you still require further assistance, please send an email to: rungesupport@runge.com.au

SOFTWARE PRODUCT TRAINING

Product training schedule for December 2008, Brisbane:

- XPAC 7 10th – 12th December 2008

On-site training is also available at a time and place to suit your schedule. Please contact Runge's Training Consultant, Margaret Calder ([email: mcalder@runge.com.au](mailto:mcalder@runge.com.au)), if you wish to attend or organise a training course.





Forum

We have created a forum where you can share information with other Runge software users. Use the forum to post any questions you have about any of our products, share best practice information, workarounds, and solutions. However, if you require assistance from our Help Desk, please refer to the Help section below.

Go to the [Runge Forum](#) web page where you'll find links to our product forums.

Topics currently being discussed in the forum include:

- [XPAC: Pervasive Engine Not Initialising & Large Models Not Opening](#)
- [XACT: Using inactive calendars when reporting](#)
- [Talpac: Operating days per year](#)

Hints & Tips

Our regular 'hints and tips' section helps you save time when using our software.

RLMS: Roaming Licenses

Roaming licenses enable constant use of any Named User software application regardless of the network connection status. By default, roaming is not enabled in the RLMS due to license consumption probabilities – users may not be actively running an application however will still consume the license.

To activate roaming:

STEP 1

Open Runge Client License Manager.

STEP 2

Select the 'Roaming days' check box.

STEP 3

Enter the number of days to roam (maximum is 7).

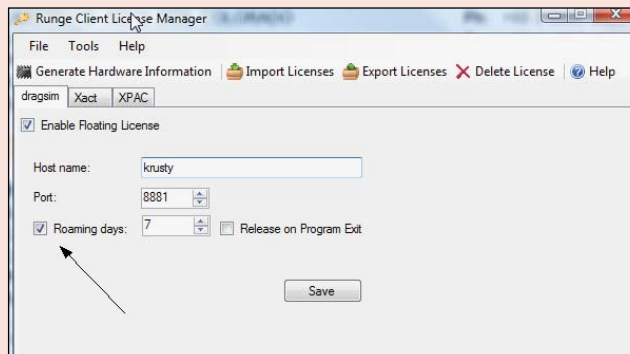
STEP 4

If you want to release the roaming license each time you exit the application, select the 'Release on Program Exit' check box.

Note: This is useful on networks that are subject to interruption.

STEP 6








Once set, restart the application for the changes to take effect.



Help

Do you need assistance using our software products?

Contact the Runge Help Desk by email (support@runge.com.au) or phone (+61 7 3100 7200). Perhaps you would like to ask us about something you've seen in this newsletter; email us at runge@runge.com.au.

Runge Technology Solutions		Release dates
	Business focused mine scheduling	Q4 2008
	Scheduling success into your day-to-day mine planning	Q4 2008
	Responsibility based budget forecasting and financial modelling	Q4 2008
	3D spatial information management and interrogation products	Q4 2008
	The industry standard for haulage fleet evaluation	Q4 2008
	Fast and effective dragline simulation system	Q4 2008
	Longwall simulation to optimise productivity	Q4 2008

Click on a product logo above for specific product details.

